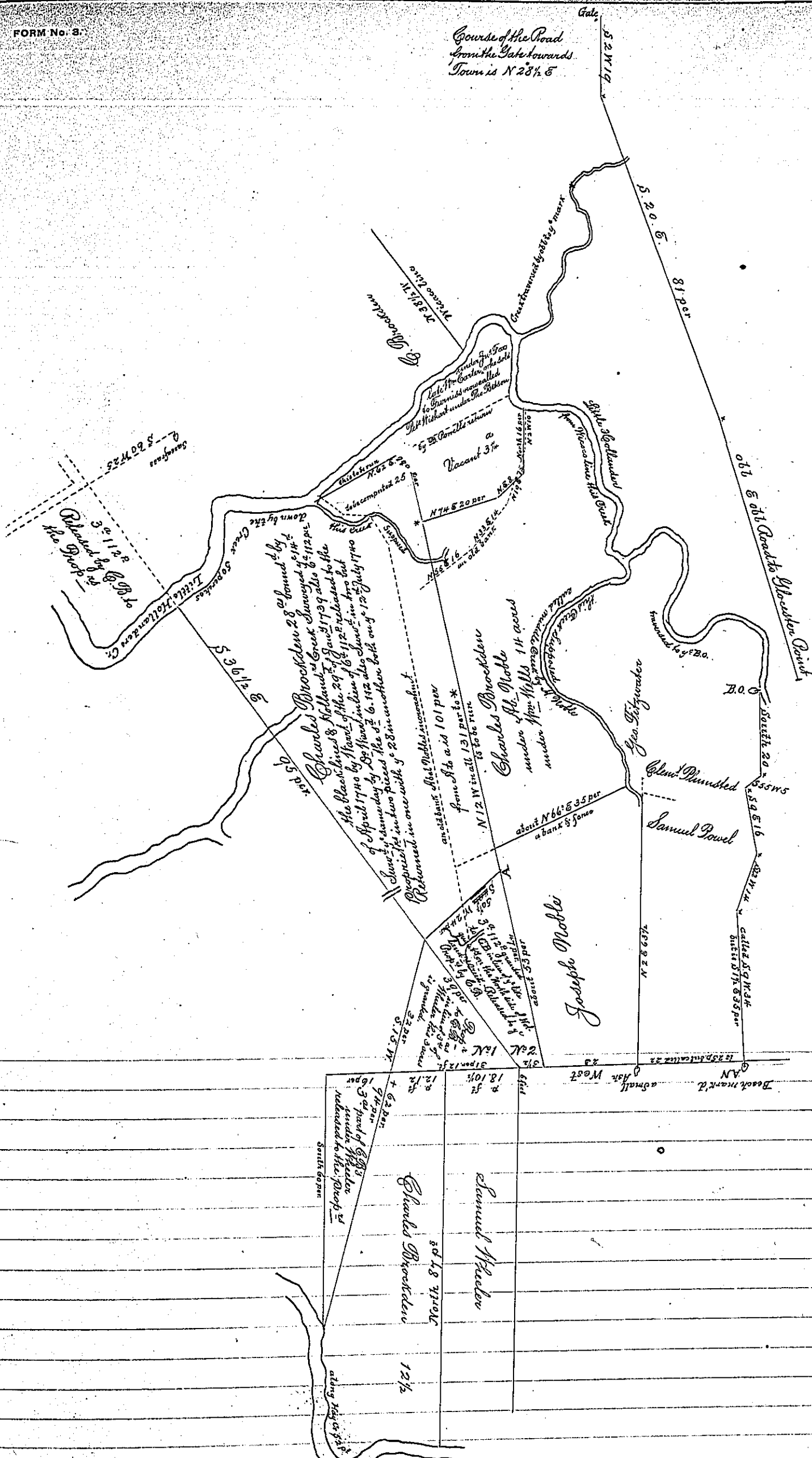


Course of the Road  
from the Gate towards  
Town is N 28 1/2 E



IN TESTIMONY that the above is a copy of the original remaining on file in the Department of Internal Affairs of Pennsylvania, made conformably to an Act of Assembly approved the 16th day of February, 1833, I have hereunto set my Hand and caused the Seal of said Department to be affixed at Harrisburg, this

thirteenth day of June 1902.

*James W. Fatta*  
Secretary of Internal Affairs.